

Acidentes ocorridos nas Rodovias Federais em 2005.

Rodovia BR 262 – MG

(Extensão total de acordo com o PNV: 999 Km)

Observações:

- 1. Deduzido 156 Km: segmento Km 196,2 a Km 352,5, coincidente com BR 381 MG, na qual são registrados quase todos os acidentes.*
- 2. Deduzido também 98 Km: segmento Km 901,6 a Km 999,8, coincidente com a BR 153 MG, na qual são registrados todos os acidentes.*

Extensão considerada: $999 - 156 - 98 = 745$ Km

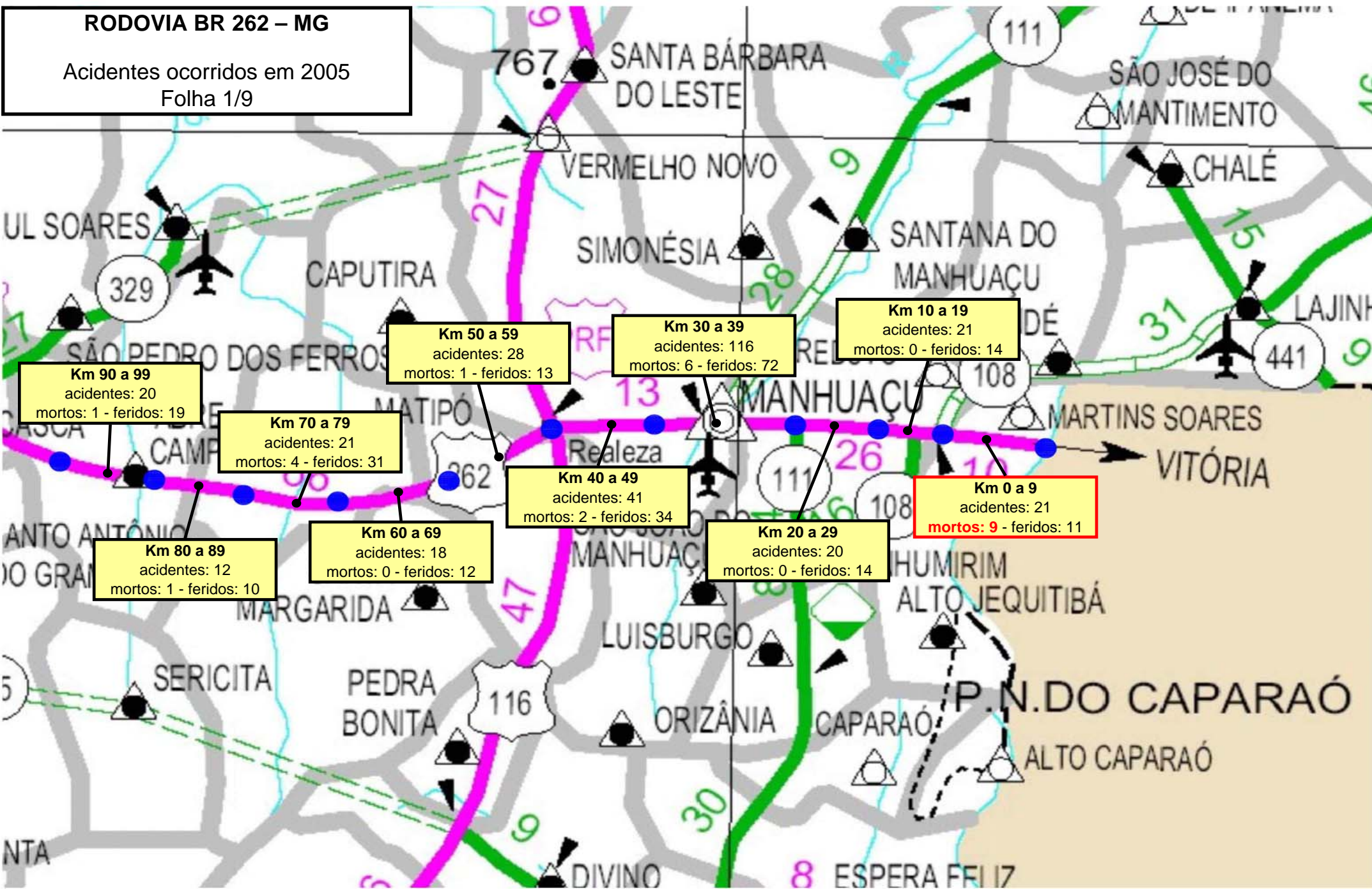
Resumo

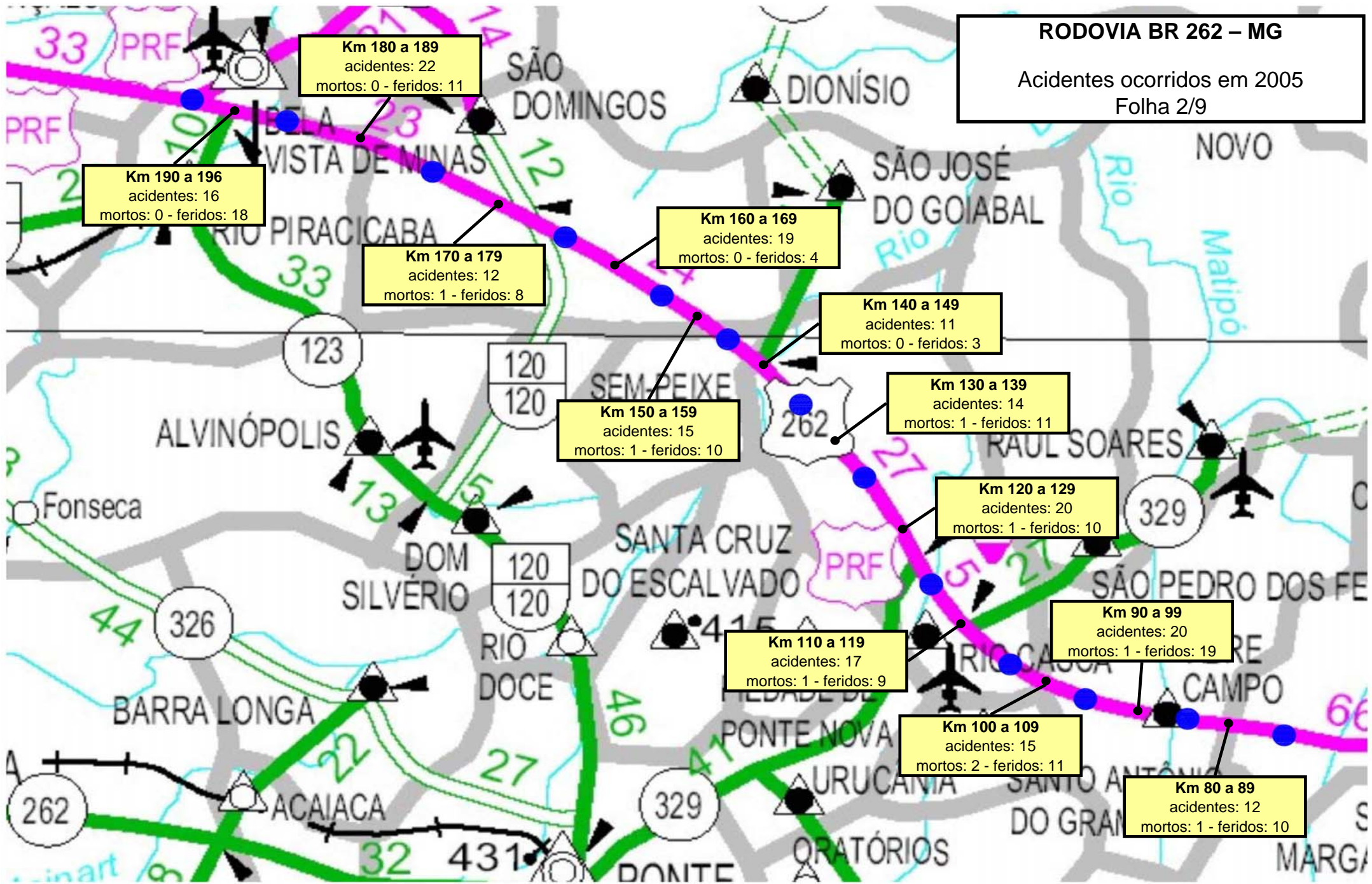
1.585 Acidentes

121 Vítimas Fatais

1.157 Feridos

RODOVIA BR 262 – MG
 Acidentes ocorridos em 2005
 Folha 1/9



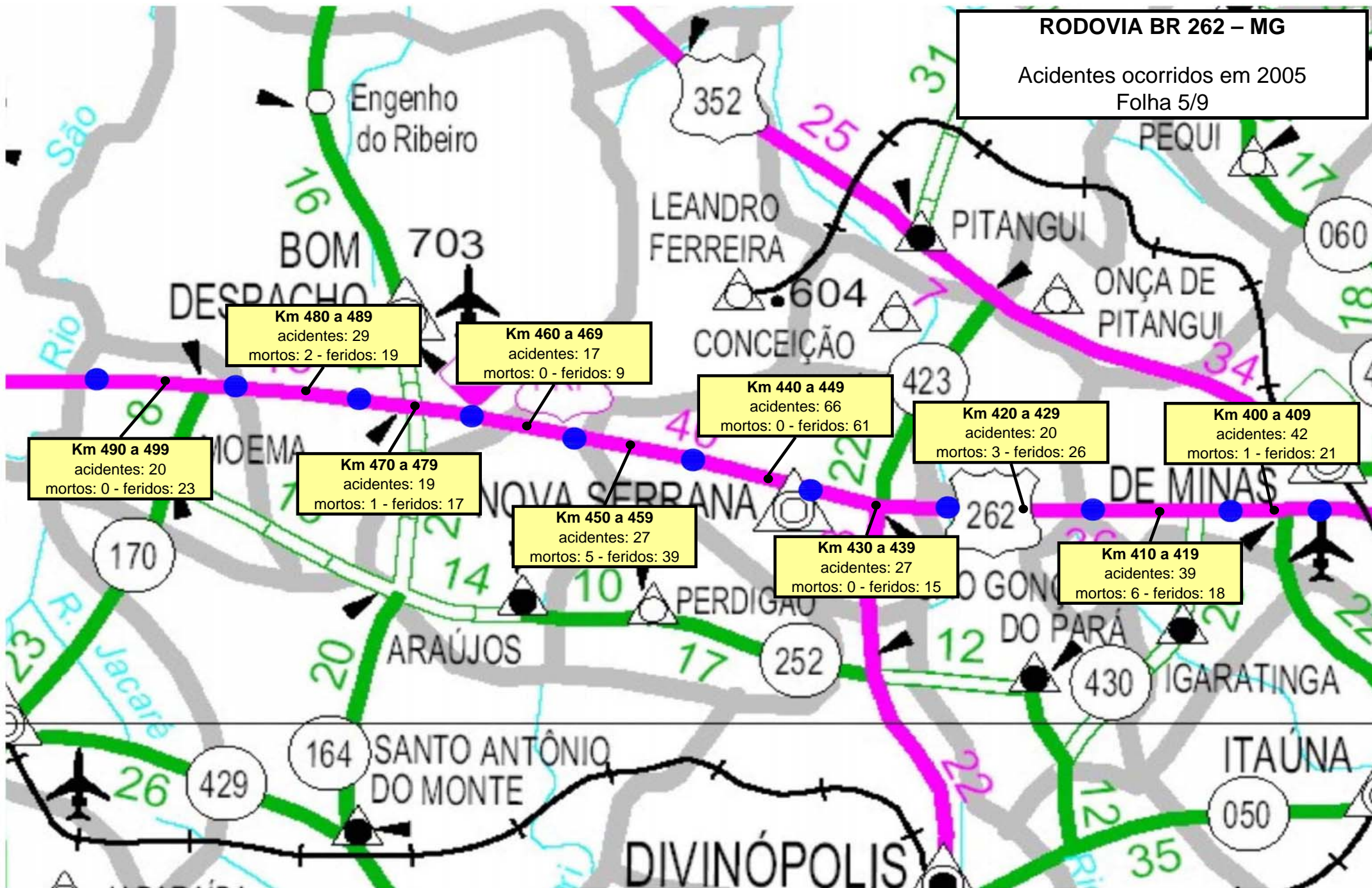


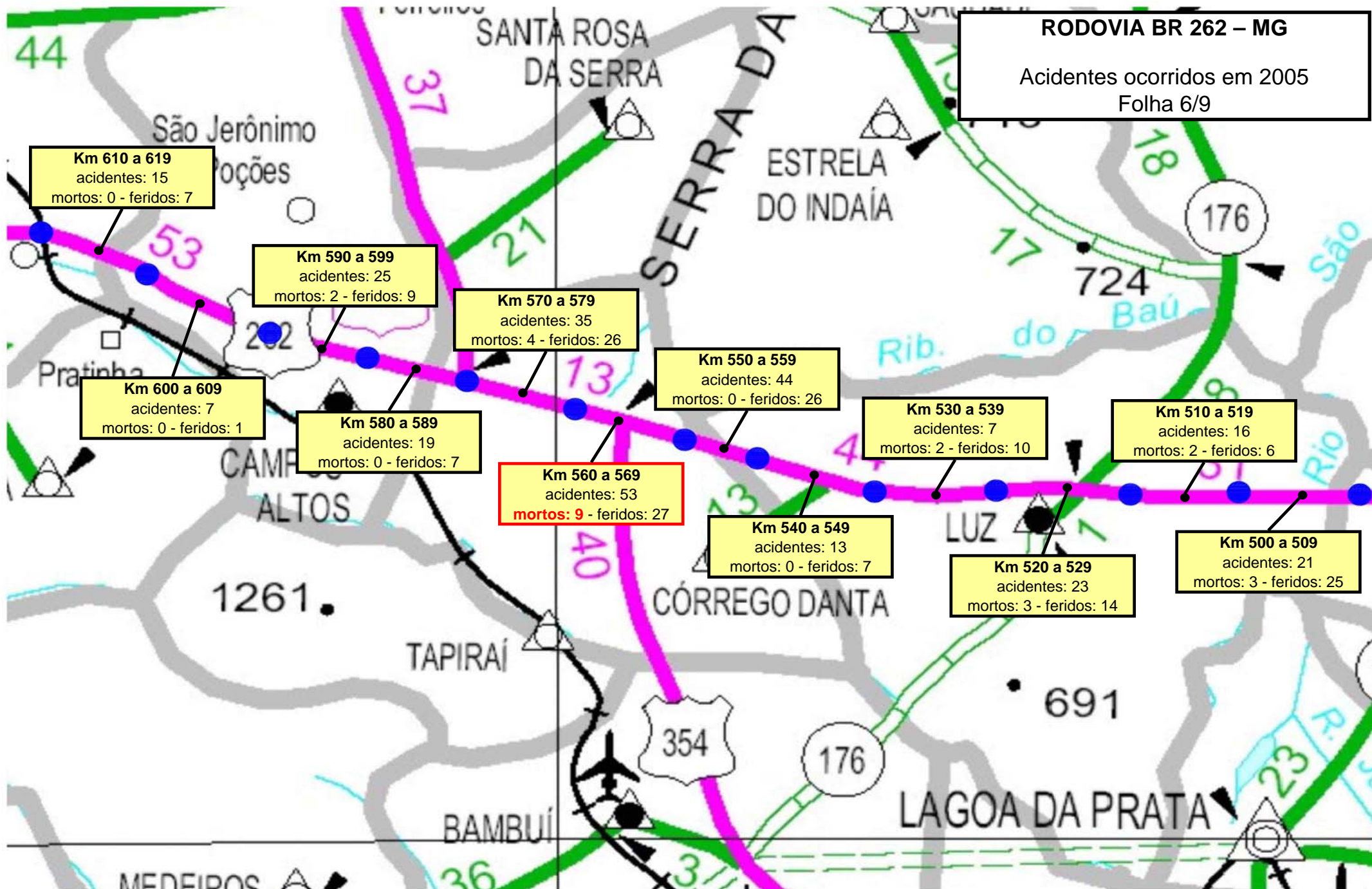
RODOVIA BR 262 – MG

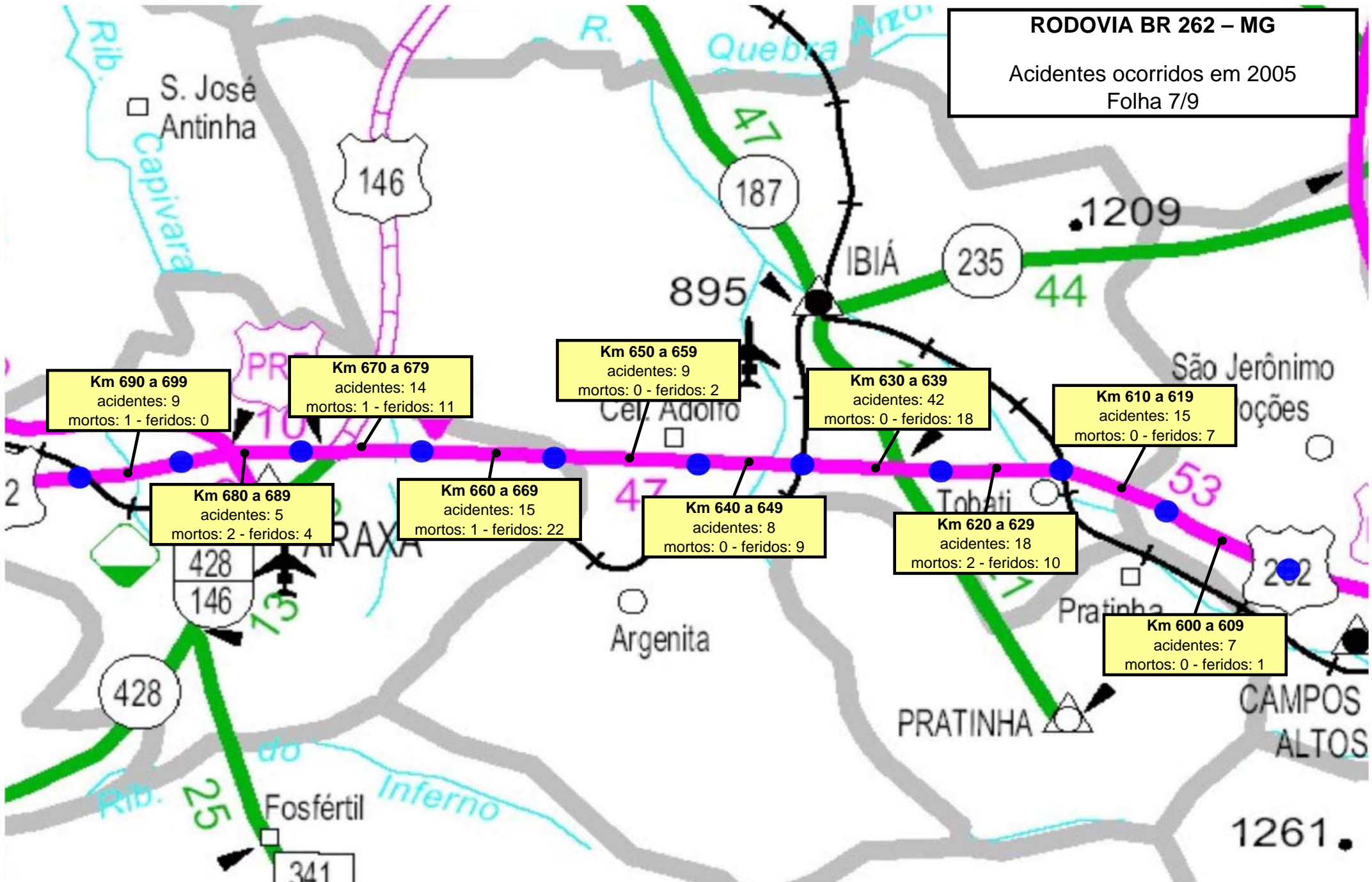
Acidentes ocorridos em 2005
Folha 3/9



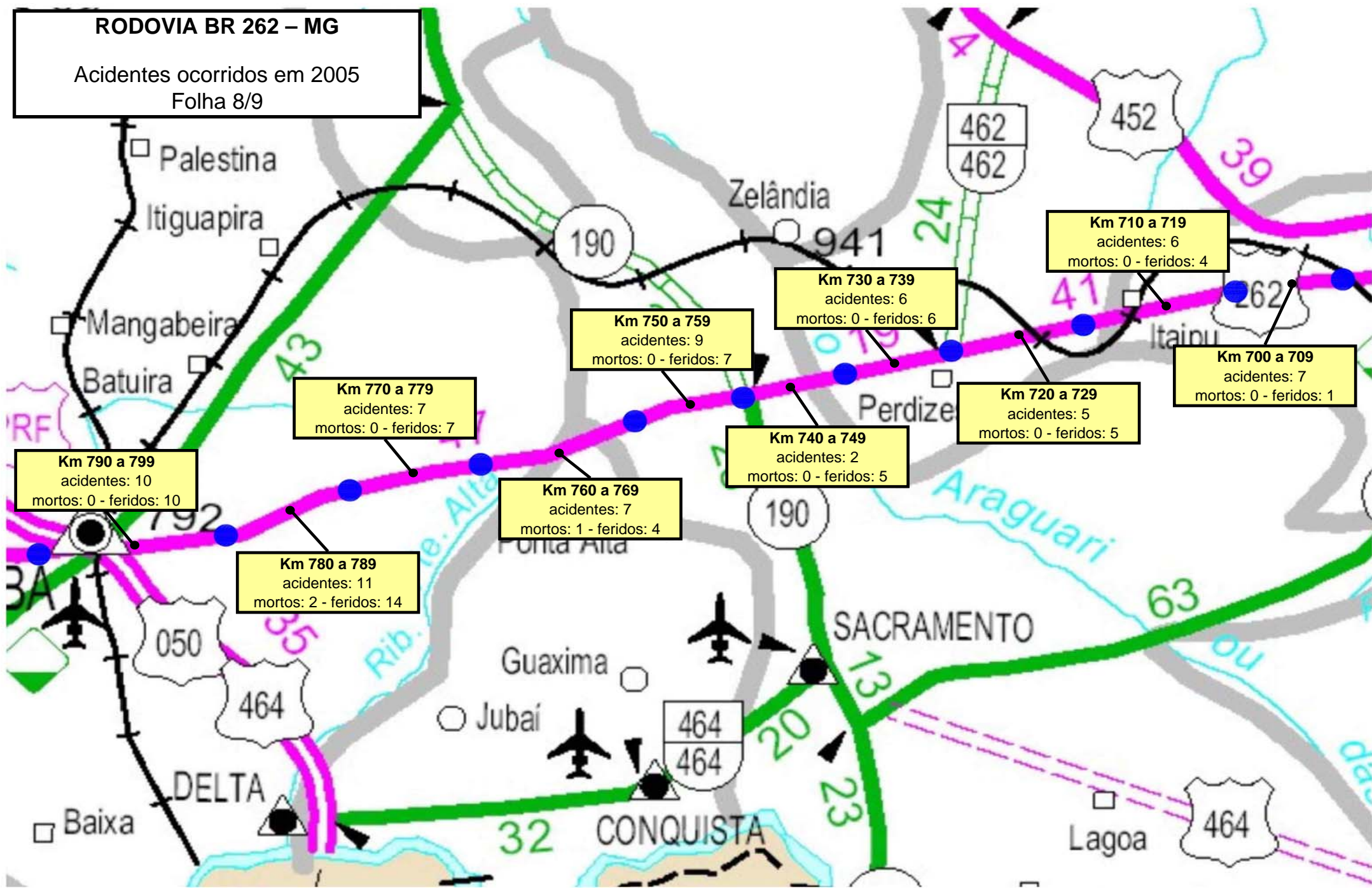




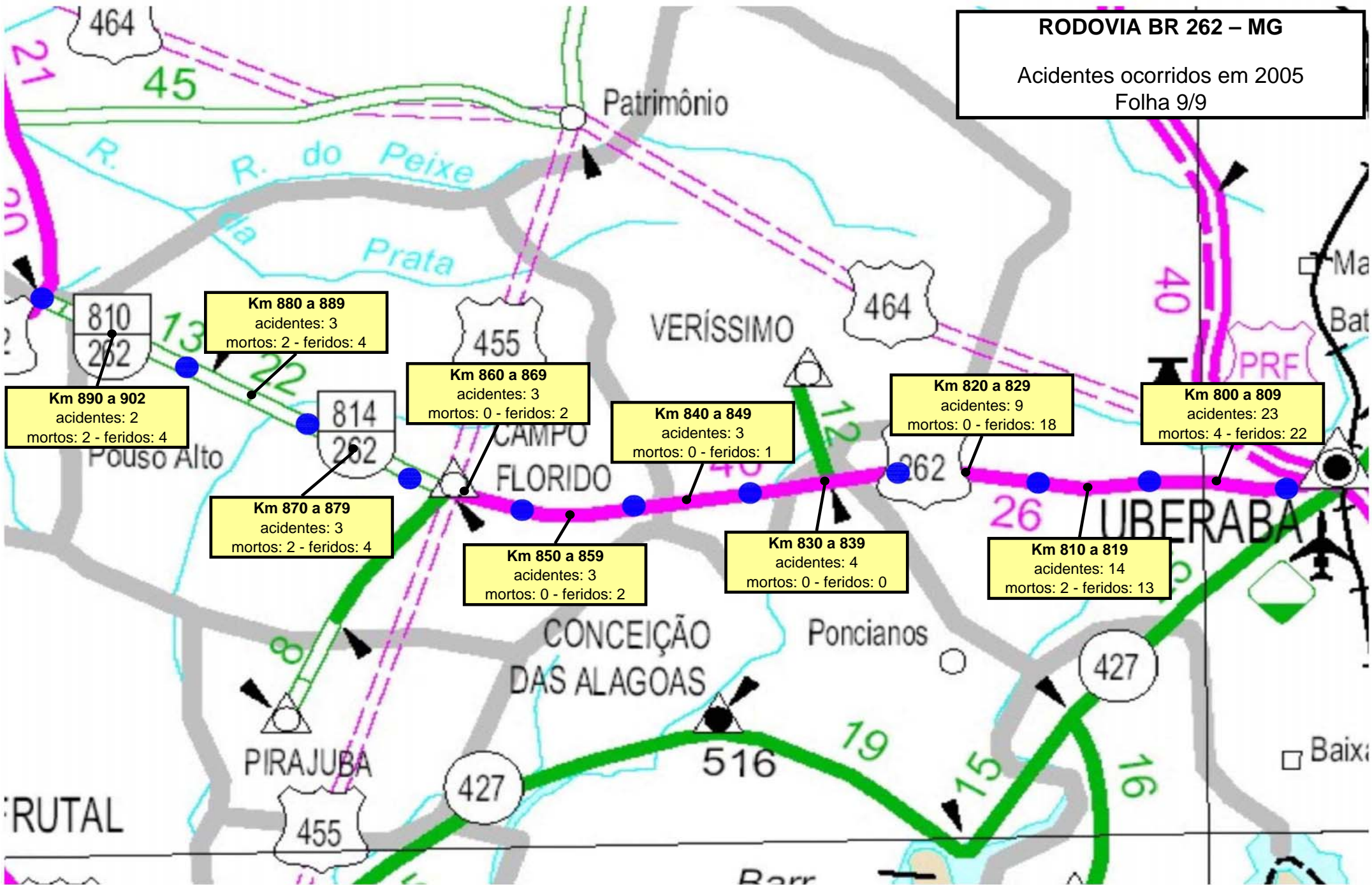




RODOVIA BR 262 – MG
Acidentes ocorridos em 2005
Folha 8/9



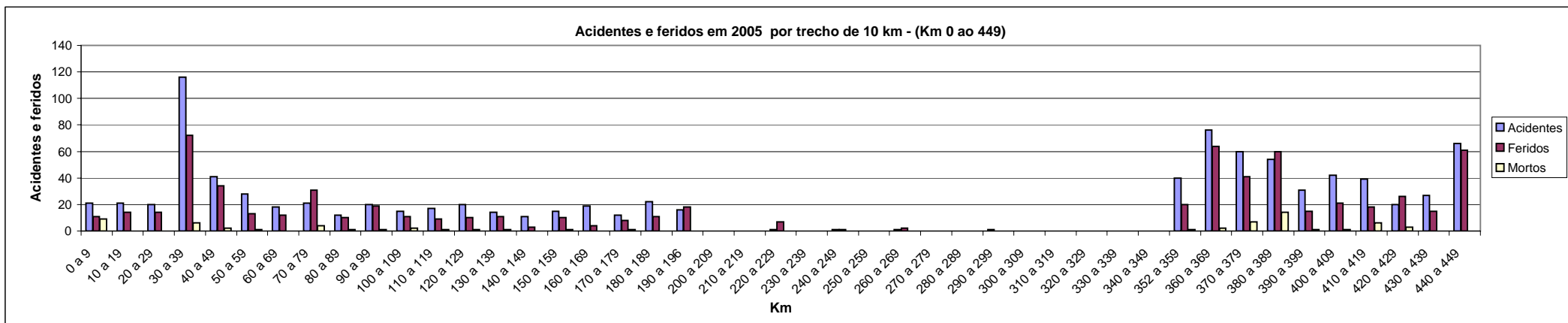
RODOVIA BR 262 – MG
Acidentes ocorridos em 2005
Folha 9/9



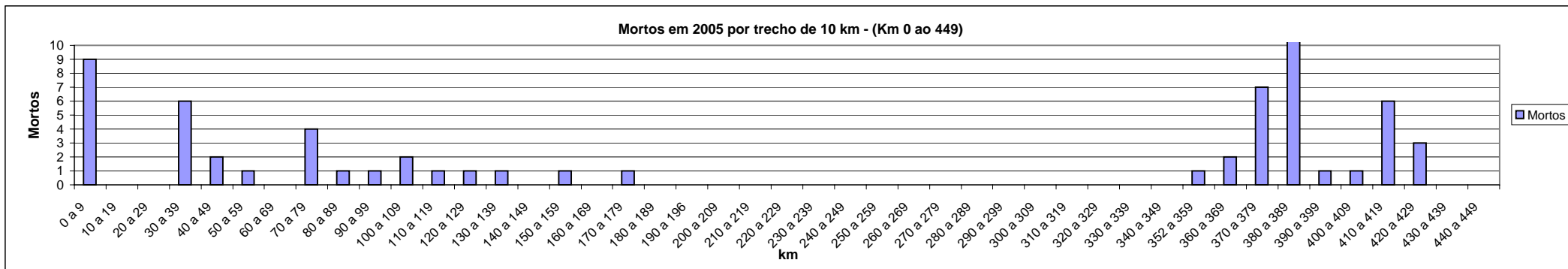
Rodovia BR 262 - MG

Acidentes ocorridos em 2005.

Km	0 a 9	10 a 19	20 a 29	30 a 39	40 a 49	50 a 59	60 a 69	70 a 79	80 a 89	90 a 99	100 a 109	110 a 119	120 a 129	130 a 139	140 a 149	150 a 159	160 a 169	170 a 179	180 a 189	190 a 196	200 a 209	210 a 219	220 a 229	230 a 239	240 a 249	250 a 259	260 a 269	270 a 279	280 a 289	290 a 299	300 a 309	310 a 319	320 a 329	330 a 339	340 a 349	352 a 359	360 a 369	370 a 379	380 a 389	390 a 399	400 a 409	410 a 419	420 a 429	430 a 439	440 a 449		
Acidentes	21	21	20	116	41	28	18	21	12	20	15	17	20	14	11	15	19	12	22	16	0	0	1	0	1	0	1	0	0	0	1	0	0	0	0	0	0	40	76	60	54	31	42	39	20	27	66
Feridos	11	14	14	72	34	13	12	31	10	19	11	9	10	11	3	10	4	8	11	18	0	0	7	0	1	0	2	0	0	0	0	0	0	0	20	64	41	60	15	21	18	26	15	61			
Mortos	9	0	0	6	2	1	0	4	1	1	2	1	1	1	0	1	0	1	0	0	0	0	0	0	0	0	0	0	0	0	0	0	0	0	0	1	2	7	14	1	1	6	3	0	0		



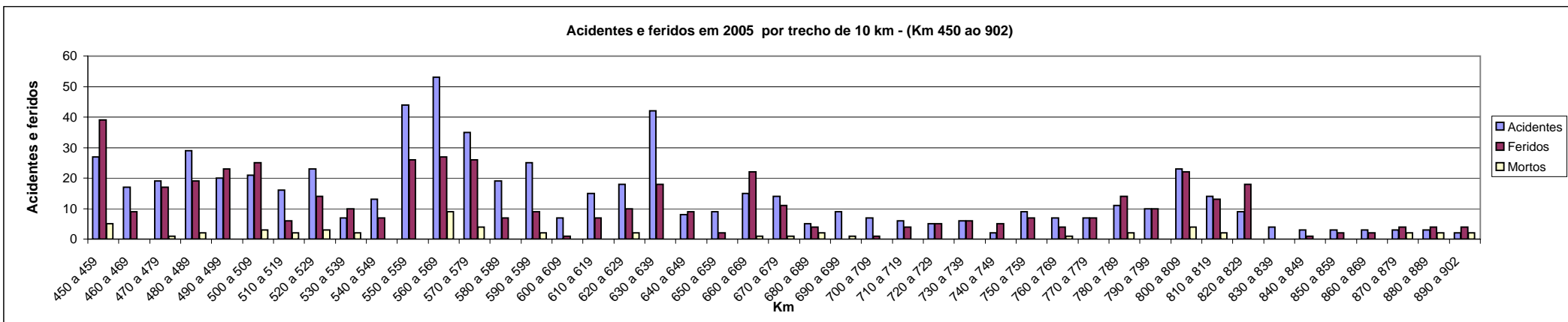
Km	0 a 9	10 a 19	20 a 29	30 a 39	40 a 49	50 a 59	60 a 69	70 a 79	80 a 89	90 a 99	100 a 109	110 a 119	120 a 129	130 a 139	140 a 149	150 a 159	160 a 169	170 a 179	180 a 189	190 a 196	200 a 209	210 a 219	220 a 229	230 a 239	240 a 249	250 a 259	260 a 269	270 a 279	280 a 289	290 a 299	300 a 309	310 a 319	320 a 329	330 a 339	340 a 349	352 a 359	360 a 369	370 a 379	380 a 389	390 a 399	400 a 409	410 a 419	420 a 429	430 a 439	440 a 449			
Mortos	9	0	0	6	2	1	0	4	1	1	2	1	1	1	0	1	0	1	0	0	0	0	0	0	0	0	0	0	0	0	0	0	0	0	0	0	0	0	1	2	7	14	1	1	6	3	0	0



Rodovia BR 262 - MG

Acidentes ocorridos em 2005.

Km	450 a 459	460 a 469	470 a 479	480 a 489	490 a 499	500 a 509	510 a 519	520 a 529	530 a 539	540 a 549	550 a 559	560 a 569	570 a 579	580 a 589	590 a 599	600 a 609	610 a 619	620 a 629	630 a 639	640 a 649	650 a 659	660 a 669	670 a 679	680 a 689	690 a 699	700 a 709	710 a 719	720 a 729	730 a 739	740 a 749	750 a 759	760 a 769	770 a 779	780 a 789	790 a 799	800 a 809	810 a 819	820 a 829	830 a 839	840 a 849	850 a 859	860 a 869	870 a 879	880 a 889	890 a 902
Acidentes	27	17	19	29	20	21	16	23	7	13	44	53	35	19	25	7	15	18	42	8	9	15	14	5	9	7	6	5	6	2	9	7	7	11	10	23	14	9	4	3	3	3	3	3	2
Feridos	39	9	17	19	23	25	6	14	10	7	26	27	26	7	9	1	7	10	18	9	2	22	11	4	0	1	4	5	6	5	7	4	7	14	10	22	13	18	0	1	2	2	4	4	4
Mortos	5	0	1	2	0	3	2	3	2	0	0	9	4	0	2	0	0	2	0	0	0	1	1	2	1	0	0	0	0	0	1	0	2	0	4	2	0	0	0	0	0	2	2	2	



Km	450 a 459	460 a 469	470 a 479	480 a 489	490 a 499	500 a 509	510 a 519	520 a 529	530 a 539	540 a 549	550 a 559	560 a 569	570 a 579	580 a 589	590 a 599	600 a 609	610 a 619	620 a 629	630 a 639	640 a 649	650 a 659	660 a 669	670 a 679	680 a 689	690 a 699	700 a 709	710 a 719	720 a 729	730 a 739	740 a 749	750 a 759	760 a 769	770 a 779	780 a 789	790 a 799	800 a 809	810 a 819	820 a 829	830 a 839	840 a 849	850 a 859	860 a 869	870 a 879	880 a 889	890 a 902	
Mortos	5	0	1	2	0	3	2	3	2	0	0	9	4	0	2	0	0	2	0	0	0	1	1	2	1	0	0	0	0	0	0	1	0	2	0	4	2	0	0	0	0	0	0	2	2	2

